

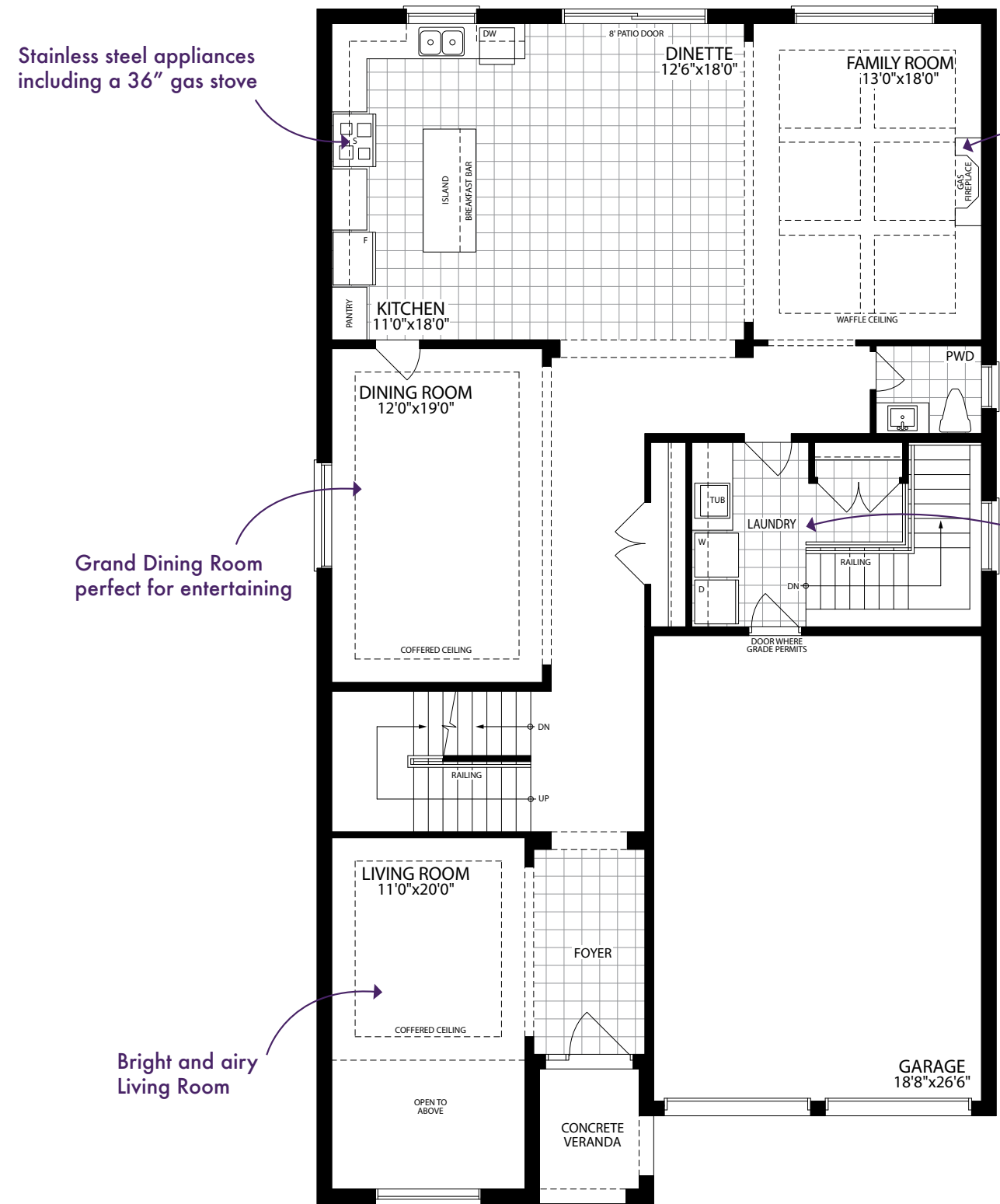
THE CAMBRIDGE

ELEVATION A & C
4280·SQ·FT
with 94 sq.ft. of finished area in basement

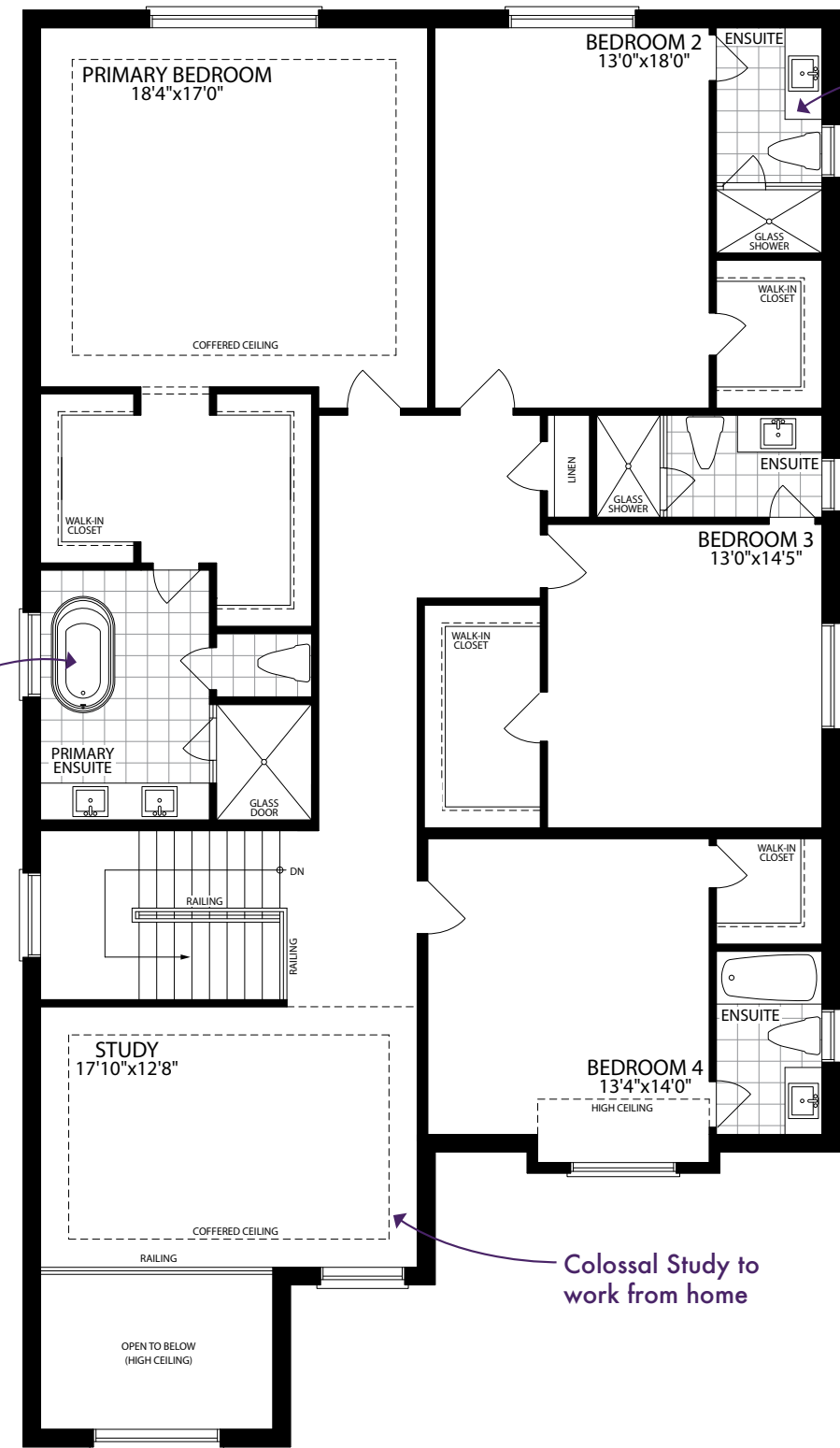
ELEVATION B
4270·SQ·FT
with 94 sq.ft. of finished area in basement

47'
BALMORAL
ESTATES

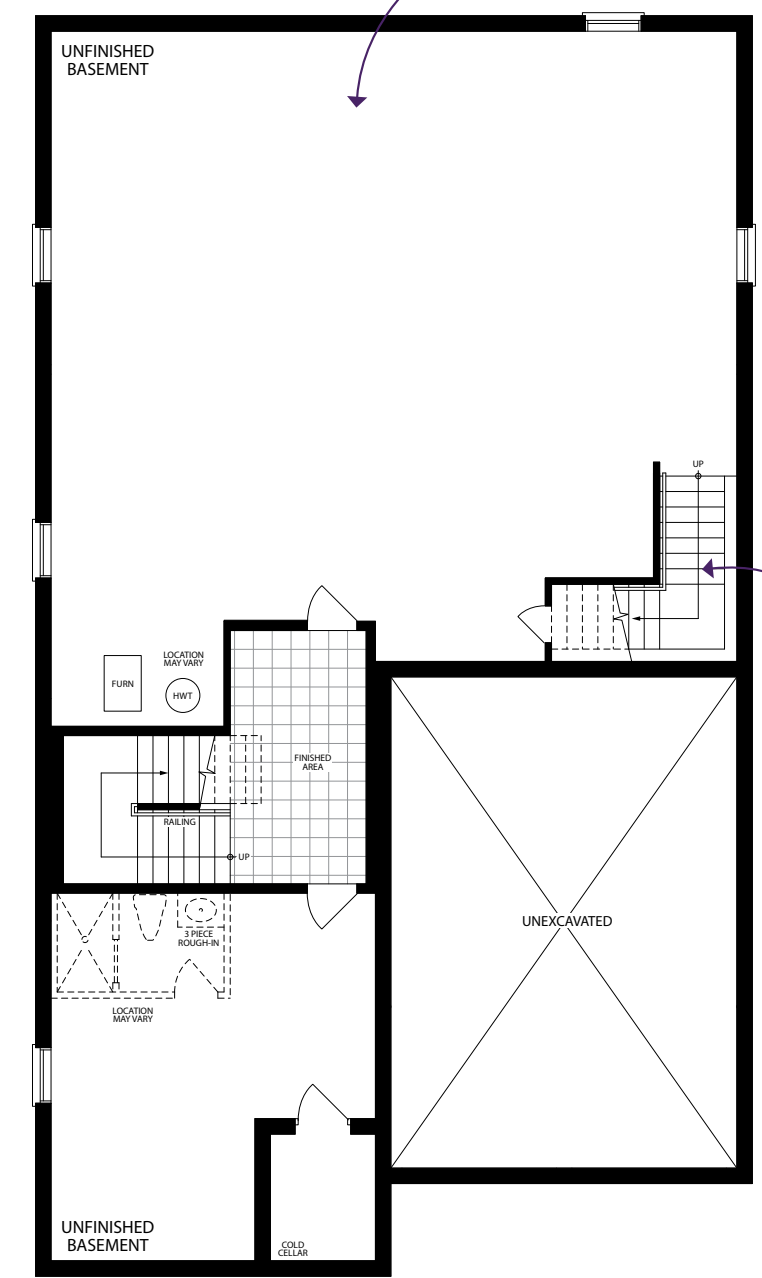




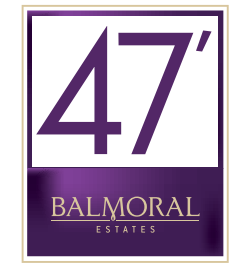
GROUND FLOOR
ELEVATION A, B & C



SECOND FLOOR
ELEVATION A, B & C



BASEMENT
ELEVATION A, B & C



Plans and specifications are subject to change without notice. E. & O. E. Actual usable floor space may vary from the stated floor area. All renderings are artist's concept.